

Notation of Uzbek Folk Music and Traditional Forms of Music in SIBELIUS Program

Usmanova Shahnoza Lutfillayevna

Department of Music Education, Faculty of Art, Andijan state university, Uzbekistan

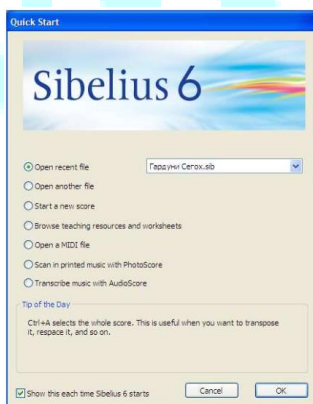
Annotation: This article focuses on working with Sibelius music editor, one of the leading programs for creating and processing music documents and music information. There are currently several versions of the Sibelius program. They complement each other and differ in the introduction of some new features. We need to focus on the most commonly used versions of the program - Sibelius 4 and Sibelius 6.

Keywords: note, file, program, Sibelius, example, memory, flash drive, list, tutorial, computer program, paper printing, note text, format.

Forming a note document. Before typing or editing a piece of music in Sibelius, you must select one of the following options (note image):

"Open recent file" - to open one of the files that was last opened. This command loads the last opened document in the program. In our example, this is reflected in the corresponding list in the window

A document entitled Garduni Segoh. You can also upload other note documents from this list to the program.

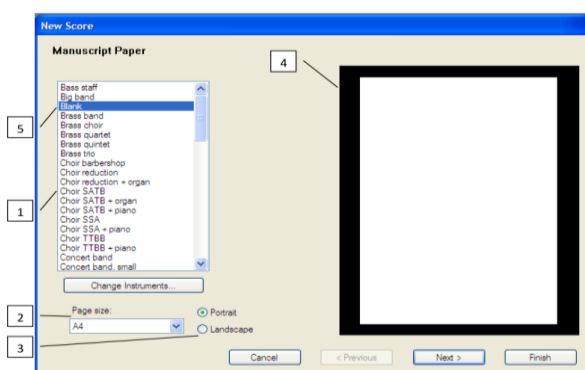


"Open another file" - open another file. Using this command, the program downloads a file saved to computer memory or other media (CD, DVD, flash drive, etc.).

Start new score - create a new score document.

Browse teaching resources and worksheets - browse teaching resources and worksheets. The program will review the stored training resources and provide you with the appropriate training modules or documents.

"Open a MIDI file" - open a file in MIDI format. If you have a file in MIDI format, Sibelius will open this file in a document in the form of a note. You can then work with this document and make the necessary changes to it.

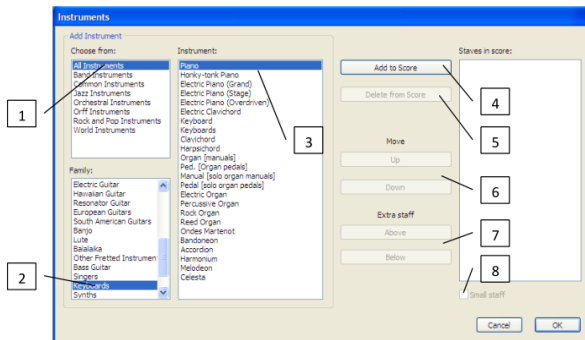


Scan in printed music with PhotoScore - Sibelius utility FotoSkor allows you to record the text of music printed on paper in Sibelius format using a computer scanner. The text of the note printed on paper must be clear and clean. It is necessary to install FotoSkor from Sibelius software installer.

Transcribe music with AudioScore - Sibelius utility AudioSkor allows you to save audio files to your computer in Sibelius format. It is necessary to carefully check the note document created by the program, as it may contain errors in the placement of notes. AudioSkor is installed using Sibelius

software installer.

To start working on a new piece of music, use the command "Start new score" - create a new note document. This will bring up a new document creation window. On the left side of this window there are samples of ready-made models (1, Manuscript Paper list, ie orchestral scores, keyboards, etc.), a list of paper format choices (2, A4, A5, etc.) and orientation (3, book or in album view). On the right side of the window is a layout of the document to be created (4). You can proceed to the next step by selecting one of the ready-made models.



If you are not satisfied with the ready-made templates, you can choose a blank page layout (5, "Blank") and go to the next step. In this case, the program will prompt you to select the instruments that will take part in the music, and when you press the "Yes" button, you will be taken to the appropriate window. This window is the Instruments selection window for the note document you are creating, and it is displayed as follows:

This window can also be opened by clicking the Gchange Instruments button in the New Score window. In the upper left

part of the tool selection window is a list of "Choose from" instruments. In most cases it is advisable to select the option "All instruments" (1). This option is very useful in expanding the choice of the desired instrument, especially in the formation of complex scores.

The bottom left list of the instrument selection window lists the families of the instruments: wood-drum, copper-drum, percussion, guitars, voices, keyboard, string, and other musical instruments. From this list, select the desired variant of the family of instruments (2).

In the middle of the tool selection window, a list of instruments belonging to the selected family of instruments will appear. In our example, these are instruments belonging to the family of keyboards. To insert the desired instrument into the created work, select the instrument (for example, piano ("Piano")) (3) and press the button "Add to score" (4). This command can also be performed by selecting several instruments.

In the list on the right side of the tool selection window, the selected instruments are displayed in sequence, that is, in the order of the score. Between the lists in the right and middle of the tool selection window are buttons for selecting instruments and adjusting their sequence:

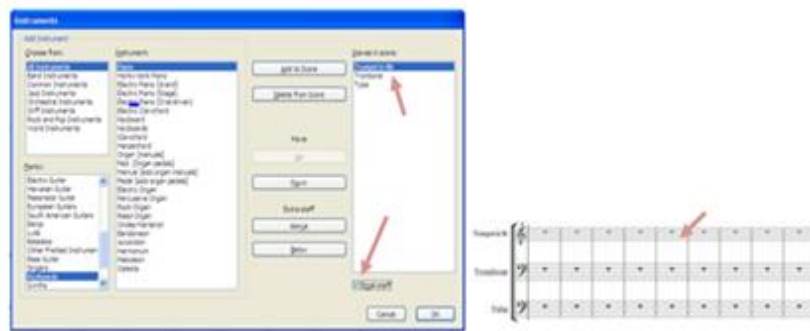
"Delete from score" - remove the instrument (instruments) specified in the right list from the instruments of the created note document. In this case, first select the wrong instruments from the right list, then press the (5) button.

"Move" (change, move). With these buttons, you can move the instruments listed in the right list up ("Up") or down ("Down") in the order of the list (6).

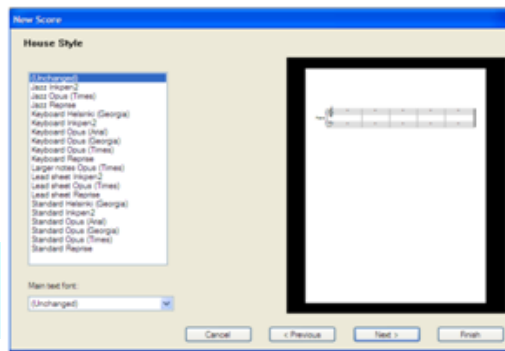
"Extra staff" (additional line of notes). With this command you can add additional strings to the notation line of the selected instruments: "Above" from the top of the string, "Below" - from the bottom. If you select the desired instruments from the list of instruments selected for the note document and press the "Above" or "Below" (7) buttons, additional rows of notes will be created for the selected instruments and they will be displayed in the list.

"Small staff" (8). This command can be used to make a line of notes relatively smaller.

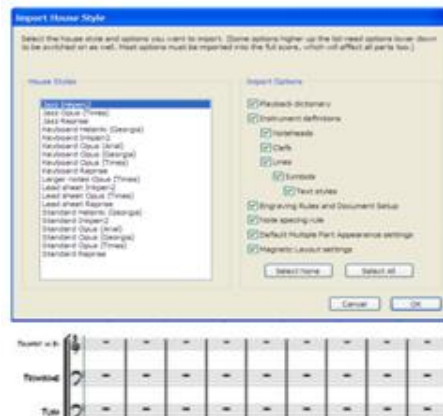
In this case, the desired instrument (instruments) is selected and a flag is set in the "Small staff" field. Then, when you click OK, the rows of notes in the Small staff category will look smaller than the rows of other notes.



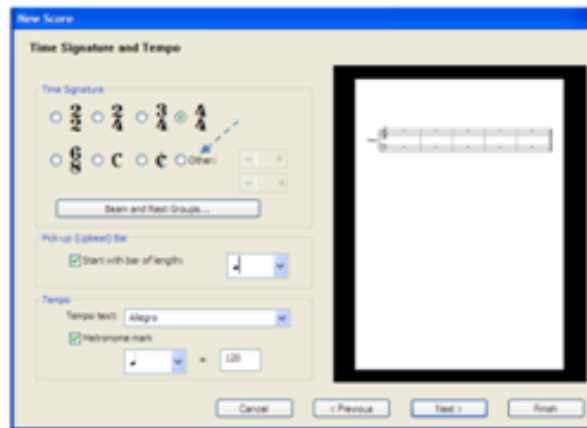
As you can see in the picture, the size of the first row of notes is smaller than the size of the other rows of notes. When you have selected the required instruments for the music document you are creating, clicking the "Next" button will take you to the window for selecting the style and font of the music document:



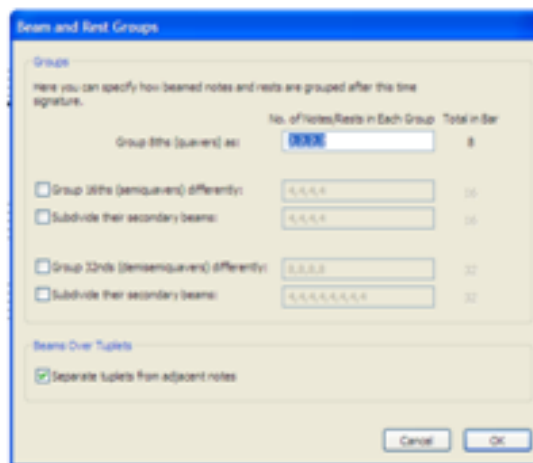
"Unchanged" is a variable, that is, the initial, standard style used for typing notes. If a different style is selected, the font of the notes and terms will also change accordingly. The style of the note document can be changed by selecting one of the options in the House Style list. You can also change the document style after creating a note document. To do this, using the command "Import House Style usi" from the "House Style" menu, you can select the desired style in the window provided and display the objects it affects (see figure). For example, if you select the "Jazz inkpen2" style and click "OK", the note document will be presented as shown in the following figure:



As you can see in the picture, the style of the note document (font set, appearance of note keys) has changed in accordance with the jazz style. If you do not need to change the style of the note document, you can click "Next" and go to the next window. In this window, the beat size, tempo and execution speed of the note are selected.

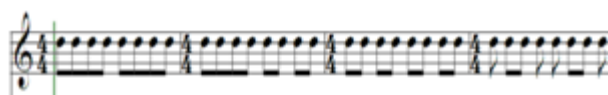


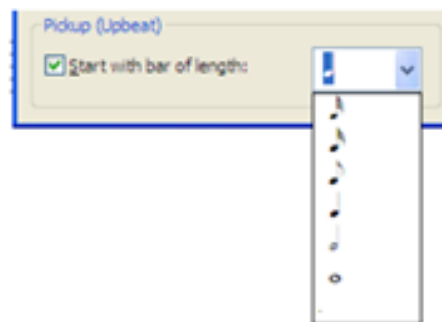
"Time Signature" - setting the initial clock scale of the work. As can be seen from the figure below, the most widely used clock measurements are available in the Time Signature group. To set the desired clock scale, simply place a marker in the area to its left. If it is necessary to set a different clock scale, a marker is placed in the field next to the word "Other". This activates the numeric fields for setting the additional size (note the indicator). By changing the numeric values in these fields, the required initial clock measurement is set.



Beam and Reset Groups. When this button is pressed, a window for grouping notes of each smaller length opens. For example, notes of a smaller length, written in 4/4 bars, are grouped according to a certain structure. Grouping of octave notes As shown in the field "Group 8 ths (quavers) as:" "4,4", ie each of the four octave notes is combined into one group. If we enter the words "2,2,2,2" in this field, we get that each group is equal to the length of two to eight notes.

Later, when octave notes are written, they automatically merge into binary groups. Using the following example, different groupings of octave notes (4,4 - 1 bar, 4,2,2 - 2 bars, 2,2,2,2 - 3 bars and 1,2,1,1,2,1 - Tact 4) can be seen:



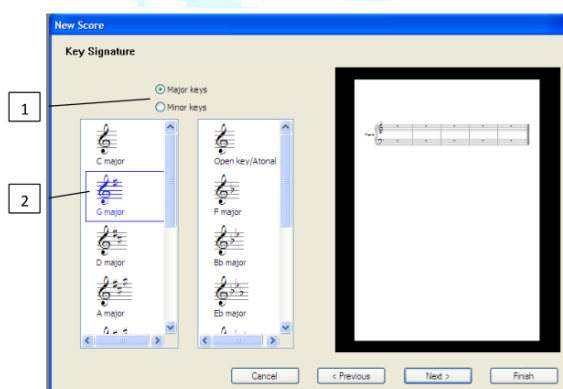


Pick-up (Upbeat) Bar group You can specify the bar size by placing a flag in the field "Start with bar of length".

In this case, the work begins with a tactile, that is, the measurement corresponding to the first beat is set by selecting a note or notes of a certain length. As you can see in the example, even if the clock speed is 4/4, the initial clock starts with 1/8 clock speed.

The Tempo group selects the Temp version of the musical work (for example: Allegro, Adagio, Moderato, etc.) from the Tempo text list. This list contains the most basic temp instructions. If you do not find the desired tempo in the list, you can enter it on the keyboard and type it.

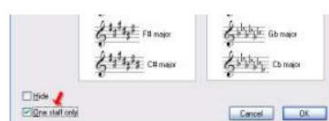
Metronome mark - (metronome mark, execution speed, speed). By placing a flag on this field, the metronome will be launched and it will be possible to indicate the speed of performance of the work. Of course, if the "Temp" instruction is set, the performance of the work will be played at an average speed corresponding to the "Temp" instruction. However, it may be necessary to increase or slow down the execution. In this case, the metronome is turned on (a flag is placed next to the word "Metronome mark") and the speed of the selected note (for example, a quarter note) is displayed (for example, 120).



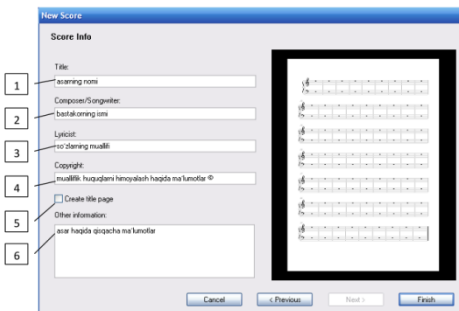
After selecting the timing and tempo of the work, click Next to the window called "Key Signature". In this window you can select the tonal basis of the work (Major or Minor) (1) and from the corresponding (diesel or bemole) lists (2) the option of the required number of key symbols:

Atonality rules. The tonality of some works (shortcut - "K") is atonal, ie the tonality of the instruments involved in the musical work may be different. In case of tonality, after the note document is formed, the string of notes of the instrument to be written in another tonality is determined and the command "Key Signature" (shortcut - "K") is called from the "Create" menu. This will open

the Tone Setup window, in which you select the tonality corresponding to the instrument, set the flag in the field "One staff only" (for the selected line of notes only), then click "OK" (see figure):

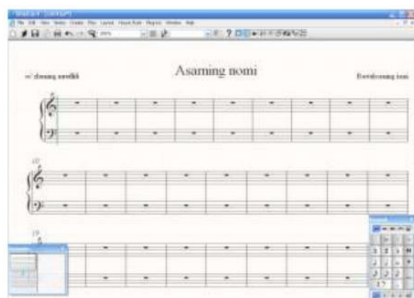


As you can see, each line of the note has its own tone.



When the tone is selected, click "Next" to go to the window "Score info". The following information can be entered in the fields provided in this window: title of the work (1), name of the composer (2), author of the words of the poet or song (3), information on copyright (4), Determining the availability of the title page (5), other additional information about the work (6).

When you have entered all the required information, click "Finish". This will close the window for creating a new music document, and the structure of the music document will be displayed on the workspace of the program ready to start.



In conclusion, a composer must not only hear music, but also be able to bring it to life in his imagination. Therefore, it is better to use a pen and paper to write the lyrics of a new piece of music. The manuscript of the note text can be entered into the computer using note editors. This is how the true fruit of creation is created. This means that note editors are needed to digitize a composer's handwritten work. However, some student composers start typing on a computer, which has an invisible negative impact on their creativity,

abilities and imagination.

First, note editors generate digital sound by extracting the sound of dialed notes from computer speakers. As a result, the student's ability to hear adapts to these digital sounds and confuses the target with the natural sound of a real musical instrument. Although the music sounds smooth and fluent in the note editor, it may sound different on a real musical instrument and distort the overall theme of the melody. In the end, the audience will be presented not with a piece of music, but with a "semi-finished product".

Second, the practice of instrumental and musical literacy is deteriorating. The note editors set the sound limits for each instrument, which are controlled using a corresponding function (notes that are outside the sound range are displayed in red). Of course, this feature is very convenient and useful. However, it is not always right to rely on a computer without relying on one's own knowledge and skills. This is because musical literacy and instrumental skills are relatively developed in creative students who rely on their experience and practice.

Third, note editors have a function that displays and controls the beat. This function allows you to view and control the contributions to the notes and pauses on the beat. For example, if an octagonal note is placed on a 4/4 scale bar, the remaining lengths on the bar are displayed in the form of pauses - one octave, quarter and half pause:

This feature is very useful in teaching elementary music literacy in music schools. However, this function can have a negative impact on the general musical literacy of the composer-student of higher education. Because a student who is accustomed to creating his work only on a computer, makes minor mistakes in writing a piece of music in manuscript form, and then spends a lot of time to correct shortcomings. As a result, the general idea of the musical work may be undermined.

References:

1. Matyokubov O. Introduction to the basics of professional music in the oral tradition. -T., "Teacher", 1983.
2. Test program on music culture in general secondary schools (grades 1-7) -T., 1998.

3. Methodical recommendations for 7th grade music lessons in general secondary schools. (Authors: O.Ibragimov, H.Nurmatov.) -T., 1994.
4. Electronic reference book of Sibelius program. 4.0., 6.2. versions.
5. Sibelius Software Limited (2007-2010).
6. Umurov N.K. Music editor SIBELIUS 1.1 (structure, features and use). –T., 2008.

